

AccessPCHT™

Installation and Operation Manual Model 9A02 Software Version 2.0



AccessPCHT™ Installation and Operation

Welcome to the AccessPCHT installation and operation guide. This guide will help you install and use the AccessPCHT software in your home theater display. Please check to make sure you have the following items in the bundle you received:

- A female DB9 to male DB25 serial cable.
- A CD containing the AccessPCHT software (Model 9A02 version 2.0) and installer.
- Installation and operation instructions.
- One Model 970 Serial Interface.

If any of these items are missing or damaged, please call Audio Authority at 1-800-322-8346 for replacements.

Requirements for Running AccessPCHT

1. Access PC runs on any IBM compatible computer that meets or exceeds the following specifications:

- A 133 MHz Pentium™ CPU (or equivalent)
- 32 MB of RAM
- A 2 MB video card that is capable of 800x600x24bpp
- A 2 GB hard drive
- A CDROM drive
- Two RS-232 serial ports (If the touchscreen monitor is USB, only one RS-232 serial port is needed)
- Windows™ 95 or later operating system
- A standard keyboard
- An optional PS/2 style mouse (or serial mouse not sharing an IRQ)

Note: Use the included cabling from the PC and touchscreen manufacturers.

2. An Access Model 970 serial interface module (included with the AccessPCHT bundle) connected to an operational Access Demonstration Network.

3. Recommended: A touchscreen monitor (An Elo 15" or 17" IntelliTouch is recommended)

Note: A standard monitor may be used instead, with a pointing device such as a mouse or trackball.

Hardware Installation/Hookup Procedure

1. Power OFF the Access system.
2. Find a suitable location for the PC in or near the display.
3. Connect the touchscreen to the PC. For serial monitors, connect (DB9) to COM2* on the PC (A). For USB monitors, connect USB port on the monitor to an open USB port on the PC (B).
4. Connect the DB15 video cable to the touchscreen and PC video card (C).
5. Connect the 970 module to COM1* (DB25 to DB9) on the PC (D)
6. Connect the 970 to the Access system bus (E).
6. Connect the PC keyboard (F).
7. Connect the PC power cable (G).
8. Connect the touchscreen power cable.
9. (optional) Connect a PS/2 style mouse (H)**

* Actual configuration may vary.

** If connector is present. Note: it is possible to use a serial mouse on a COM port that is not sharing an IRQ.

*** Please note that COM1/COM3 and COM2/COM4 share IRQs, so try to avoid IRQ conflicts. Some installations may share an IRQ between the touchscreen and the modem, but only one may be in use at a time. Most installations performed by Audio Authority will use separate IRQs, so all devices can be used at once if the hardware configuration is possible.

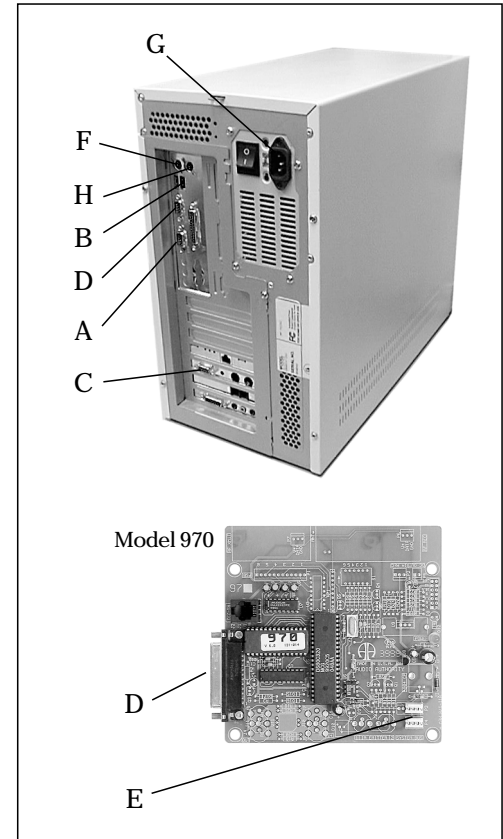


Figure 1.

Software Installation and Setup

Apply AC power to the PC and the Access System. Insert the CD into the CDROM drive and the install program will autoload and guide you through the installation process. Please be sure to read the end user license agreement.

After the installation process is complete, please follow the manufacturer's instructions for calibrating your touchscreen. Next, double click the AccessPCHT icon on the desktop to run the program. During this first run, the software may display error messages because the hardware does not match the defaults. This is normal and should not recur after setup is complete.

Once the software is loaded, touch the "door" icon near the sofa (see Figure 7, detail 7) to bring up the administrative password dialog. The default password is "111". Once the correct password has been entered, the administrative dialog will appear (Figure 2).

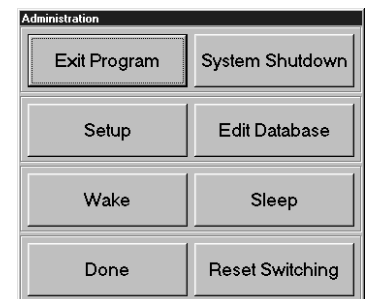


Figure 2.

Initial Setup

Press "Setup" to display the system configuration dialog (Figure 3). In the lower left section, select the serial port that is connected to the 970 module. Refer to the "Setup" section below to set the other controls to your preference.

After you have finished setup, select "Done/Save". Then press "Exit Program" and restart the AccessPCHT program.

If you encounter any errors at this point, please carefully check all connections and PC hardware for mis-configurations before calling Audio Authority technical support.

Now you may begin building the product database for the display (see Editing the Product Database).

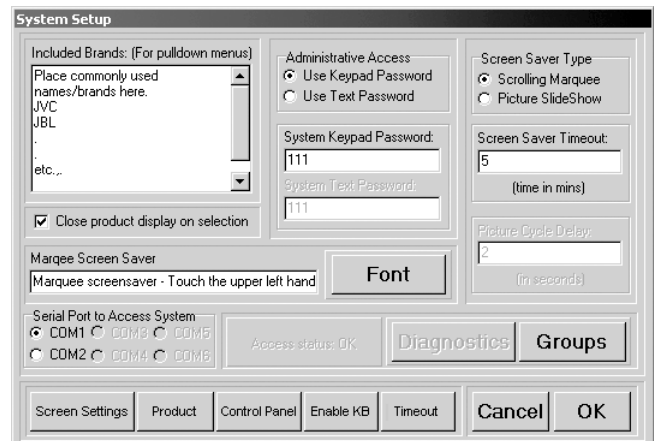


Figure 3.

Other Settings

- **Included Brands:** Type all commonly used brands in this box. These items will be accessible when editing the product database via pull-down menus. Entering them here saves time and insures uniform spelling and/or abbreviation.
- **Administrative Access:** Enter a password. This option allows for the selection of either a numeric password that can be entered via on-screen numeric keypad or an alphanumeric password entered via the keyboard.
- **Screen Saver Type:** These items allow for the selection of either a marquee scrolling a user-defined message or displays a picture slide show which is user-defined. All files reside in the SCRNSAVR directory. These must be BMP files. Pressing the upper left hand corner of the display terminates the screen saver.
- **Screen Saver Timeout:** This is the period of inactivity (in minutes) before the screen saver becomes active.
- **Cycle Delay:** The number of seconds to display each picture in the picture slide show screen saver.
- **Marquee Settings:** Enter the message you wish to display when the marquee screen saver runs, and choose a font and size for the marquee text.
- **Serial Port Selection:** Select the serial port to which the Model 970 is connected.
- **Access Diagnostics:** Displays a list of detected modules, a list of the currently selected modules/ positions and displays an error message if required modules are not found or if modules are not addressed correctly. In the diagnostics dialog, pressing the "Reset/Check" resets the Access system and forces the model 970 to poll the system modules, and check for system changes.
- **Groups:** Allows modification of default product group settings on Access switch modules (Figure 4). Make sure all group addresses in this dialog box match your switch module settings. Any groups not activated in the Product window (see below) are ignored by AccessPCHT.

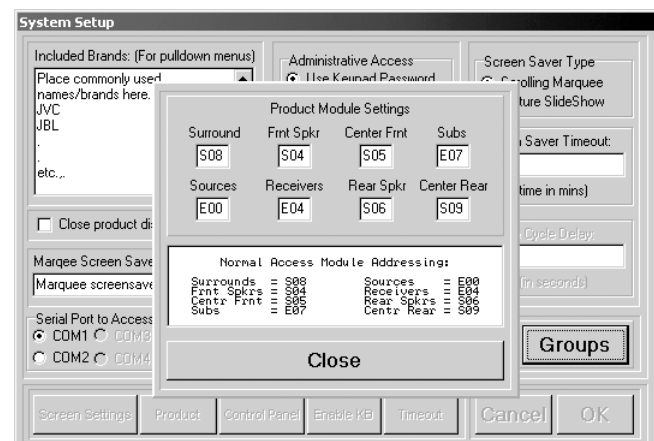


Figure 4.

- Screen Settings: Calls up the display properties dialog.
- Product: Activate only those product groups which will be controlled by the Touchscreen. For instance, if there are several sources to choose from, check the “Enable Sources” product group checkbox (Figure 5). If not, uncheck it. AccessPCHT will show only those product group names and icons which are activated here. If you enable “Back Surround” and/or “Back Surrounds” it is usually best to also check “Enable Sound Stages” to simplify the transition between 5.1, 6.1 and 7.1.

This dialog box also controls two other elements which can be made visible or invisible on the main screen. Check the “Enable INFO buttons” checkbox only if you wish to enter details about each product in the database. Check “Enable Pricing Information” if you would like to enter and show pricing for each item.

- Control Panel: Calls up the Windows™ operating system control panel.
- Enable KB: Enable or disable the keyboard.
- Timeout: To cause the display to revert to a particular configuration of products as a “Default System,” enter the position number (00, 01, 02, etc.) of each component here (Figure 6). To prevent a component from changing at timeout, enter a “-1” for its position. At the bottom, enter the number of seconds of switching inactivity before the Default System is activated.
- Cancel: Exit, do not save these settings.
- Done/Save: Exit and save these settings.
- Close Product Display on Selection: Automatically closes the product display list when a selection is made. Normally, you must touch “Done” in the product display list after selecting a product.

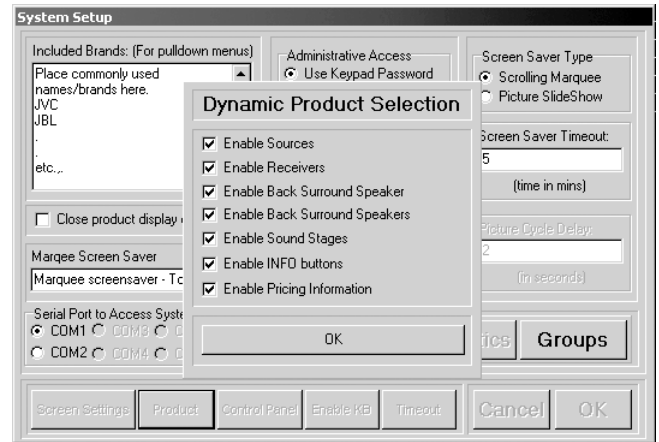


Figure 5.

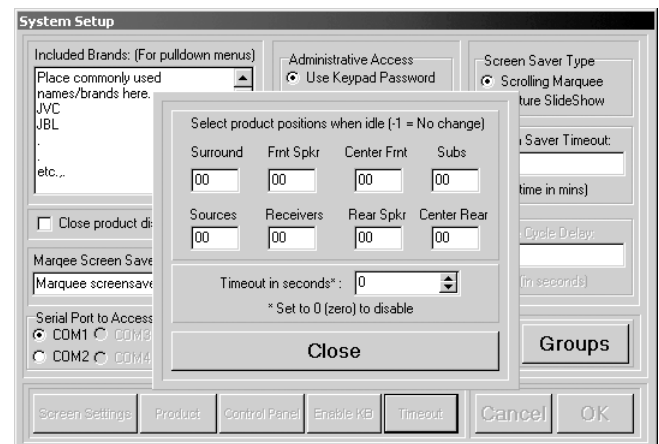


Figure 6.

Customizing the Q&A Section

The Question and Answer section in the lower right-hand corner of the main screen is a customizable field. To enter your own questions and answers, explore to the directory where you installed AccessPCHT. Find the “Settings” folder inside the PCHT folder. Inside is a file named Info.TXT. Double click on this file to edit it.

You may replace one or all of the questions with new questions or change the wording. Make sure you do not put a return in the question because the text wraps automatically inside AccessPCHT. Put one return after each question so that each question is on one line, and there are no blank lines between questions. Save the file and close it.

The file named Info1.TXT contains the answer to the first question. To edit it, double click it as you did the other file. The answer may be many lines, but do not put returns inside the answer unless you wish to start a new paragraph. To start a new paragraph, press return twice, so that there is a blank line between paragraphs. Save the file and close it. Start AccessPCHT to view the new Q&A.

AccessPCHT Operation Guide

The main screen where all product selection occurs is shown in Figure 7. All operating system keyboard functions are locked out while the main screen is active. To shutdown the system or exit AccessPCHT, use the Administrative Mode.

Using AccessPCHT

To select a product, you may press either the product group icon (1) or the selection display area (2) to bring up the product list. If the price feature is active, each time you make a new selection, the price appears in the right hand column, and the System Total window is updated to reflect the new configuration.

Press the “Info” button next to each product group (3) to display the product information field (if active). To view the Q&A topics, press the topic question (4). A text box pops up. Simply touch it to close the box.

To save a system in flash memory (as System A or System B), select the system you wish to save, then press either System A or System B (5) until you see the word “STORED” above the button, then release. The system is now stored. Press briefly to recall the system. Press the Select Previous button (6) to toggle between the current system configuration and the last system configuration selected.



Figure 7.

Operation tip: You can scroll through a list by sliding your finger up and down, and then make your selection by lifting your finger. Just make sure your touchscreen driver is set up so that each “button” activates when your finger leaves the surface of the touchscreen, not when you first touch it.

Editing the Product Database

Press the “door” icon (see Figure 7, detail 7) to access Administrative Mode. Type in the password (default password is 111) and press enter. Choose “Edit Database”. In the Database Editing window, choose the product group you wish to edit by pressing one of the buttons at the bottom of the window (Figure 7).

To edit an existing record, type in the information for each field, and press Tab, Enter, or select the next field using the touchscreen, mouse or keyboard. To add a record, press the “Insert Record” (+) button, or use the arrow keys to scroll down to the bottom of the database until a blank record appears. To remove a record, select the product, press the “Delete Record” (-) button or press CTRL-Delete on the keyboard.

The contents of the “Brands” pull-down menu can be edited in the System Setup dialog box. Add your most commonly used brands, so that they are always spelled and abbreviated consistently.

IMPORTANT: When you have finished editing the database, click the POST CHANGE button to make all changes effective! You may also click Post Change after each entry. Click Done to return to the main screen.

Database Editor Field Descriptions

- **SKU#:** Use any alphanumeric scheme to identify product for internal (store) use.
- **Position:** The corresponding position for this product as it is connected to the Access switching system.
- **Brand:** The brand of the product. Pressing the drop down arrow displays a list of brand names that are defined in the setup/brands section.
- **Model:** The model of the product.
- **Price1:** The selling price of the product. Some value **MUST** be entered. If you do not wish to display a price on the main screen, you must enter zero (the zero does not display on the main screen). Do not leave the space blank. The price feature can be made invisible in the “Product” dialogue box (see Figure 5).

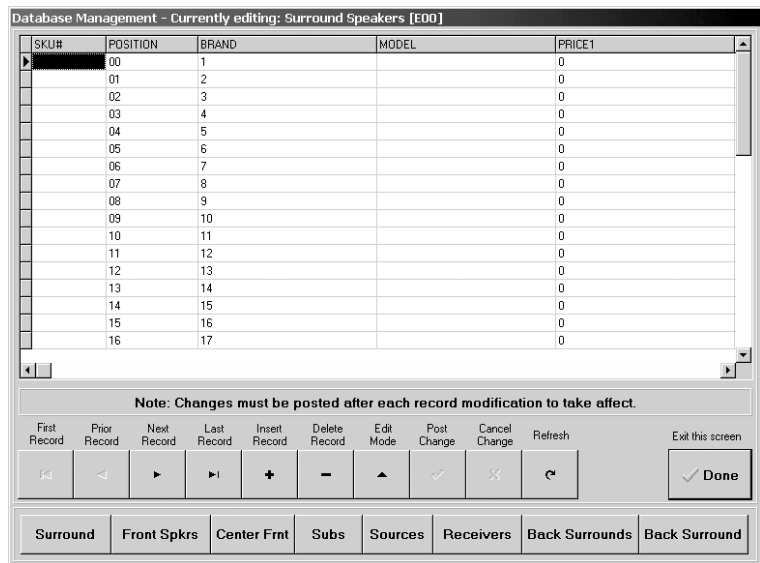


Figure 8.

- **Description:** A description of the product which can be a maximum of eighty characters.
- **Features:** A listing of the products' features which can be a maximum of eighty characters.
- **War_Period:** The product warranty period.
- **Date Created:** Not used by AccessPCHT, used to show when the product was entered (optional).
- **Date Discontinued:** Not used by AccessPCHT, used to show when the product should be removed (optional).
- **Comments:** Use this space to add any other comments. This field is displayed to the user at the bottom of the product's info window (if enabled). Again, a maximum of eighty characters may be entered.



2048 Mercer Road, Lexington, Kentucky 40511-1071
Phone: 859/233-4599 • Fax: 859/233-4510
Customer Toll-Free USA & Canada: 800/322-8346
Website: <http://www.audioauthority.com>