

User Manual

TouchSelect Touch Panel Controllers TS04 - TS09 - TS22



Audio  Authority®

Introduction

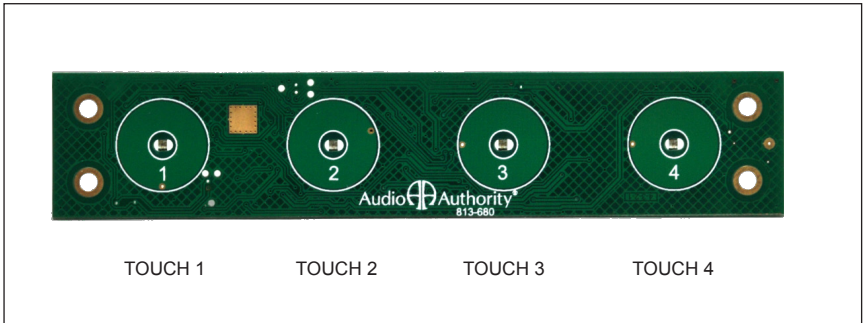
The Audio Authority® TouchSelect series of touch panels offers flexible solutions for any interactive display. TouchSelect panels come in three configurations: 4 position (TS04), 9 position (TS09), and 22 position (TS22) which can be linked together with standard Cat 5 cables. Model 1809 translates commands for serial devices. A compatible device such as a switch module or media player can be programmed to respond to TouchSelect panels via USB or RS-485.

Features

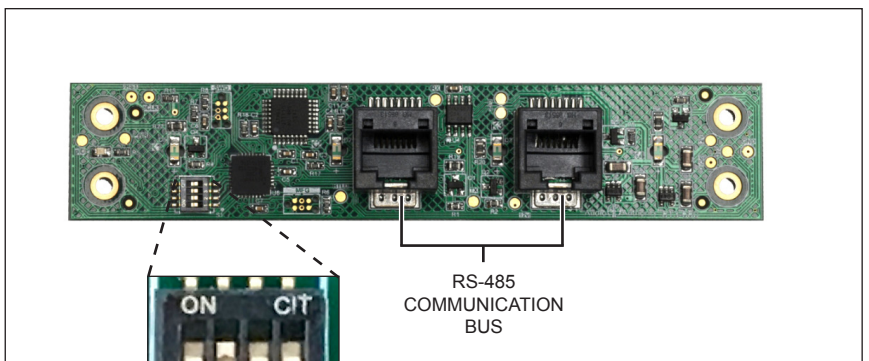
- Use only the locations you need on each panel.
- Use any non-conductive material for graphic overlay.
- Bright blue LEDs shine through many overlay materials.
- The connected player or switching device interprets each position connected.



MODEL 1809



TS04 FRONT



TS04 REAR

ADDRESS DIP SWITCH

RS-485 Communication Bus

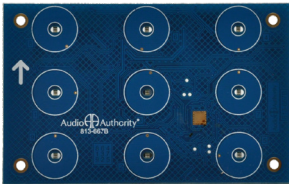
The TouchSelect series communicates via a robust, two-way serial protocol that allows many units to reside on one bus. Any of the TouchSelect control panels may be connected to one another, and finally to a translation device or directly to a compatible device such as a Model 1725M-BT audio switcher. When touched, the TouchSelect panel transmits the touch location and its address over the bus. Any RS-485 capable device can be programmed to respond to these messages, enabling player controls and switching activity.

Installation

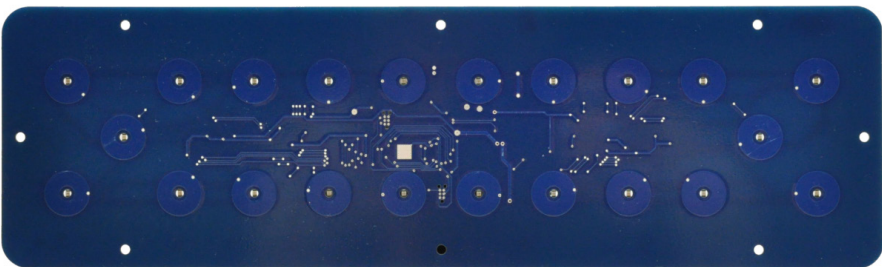
- Connect RJ-45 cable from touch panel to switcher.
- Set touch panel address using DIP switch on rear of touch panel.
- Attach the touch panel to the fixture.
- Affix the overlay to the surface of the touch panel.
- Touch each position to validate programmed commands.



TS04 (HxWxD, inches): 1 x 5 x 1



TS09 (HxWxD, inches): 2.5 x 4 x 1



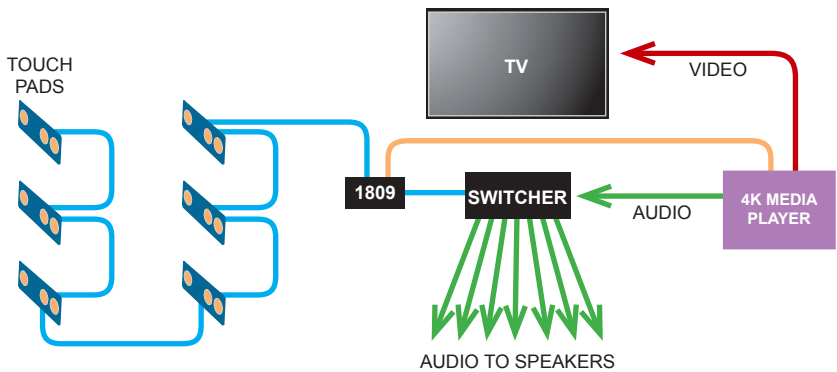
TS22 (HxWxD, inches): 3.5 x 11.75 x 1

ADDRESS TABLE

Switch	1	2	3	4
UNIT 1	OFF	OFF	OFF	OFF
UNIT 2	OFF	OFF	OFF	ON
UNIT 3	OFF	OFF	ON	OFF
UNIT 4	OFF	OFF	ON	ON
UNIT 5	OFF	ON	OFF	OFF
UNIT 6	OFF	ON	OFF	ON
UNIT 7	OFF	ON	ON	OFF
UNIT 8	OFF	ON	ON	ON
UNIT 9	ON	OFF	OFF	OFF
UNIT 10	ON	OFF	OFF	ON
UNIT 11	ON	OFF	ON	OFF
UNIT 12	ON	OFF	ON	ON
UNIT 13	ON	ON	OFF	OFF
UNIT 14	ON	ON	OFF	ON
UNIT 15	ON	ON	ON	OFF
UNIT 16	ON	ON	ON	ON

TS04 Example System:

- A touch panel next to each product controls volume and plays video tracks.
- Dedicated TV and media player for each of three sections.
- Start a demo by touching “Play Next” and adjust volume by touching “Volume” keys.
- Touch panels connect via Cat 5 to the Model 1809 RS485 to USB adapter.
- Model 1809 translates play and volume commands from touch panel to switcher and media player.
- Switcher accepts audio signal from player and routes it to selected speaker or headphones.



EXAMPLE OF A TS04 CUSTOM OVERLAY

Audio  Authority®

2048 Mercer Road, Lexington, KY 40511-1071 USA
800-322-8346 • 859-233-4599 • Fax: 859-233-4510
support@audioauthority.com • www.audioauthority.com

E-169
Rev. 20190410