

# Quick Start Guide

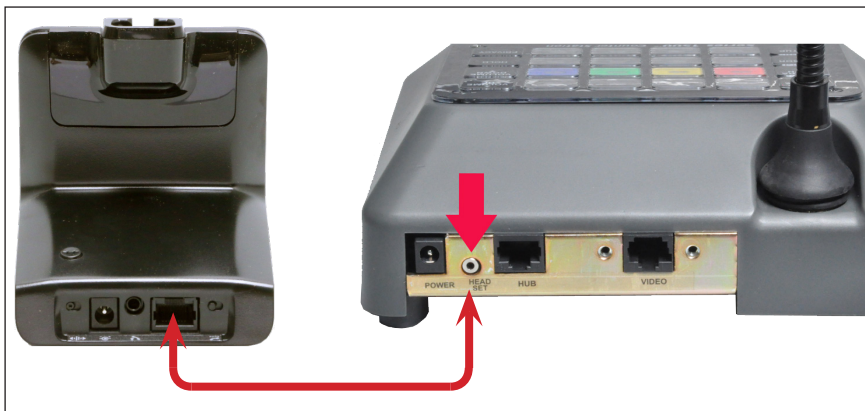
## Wireless Headset • Model 1542P

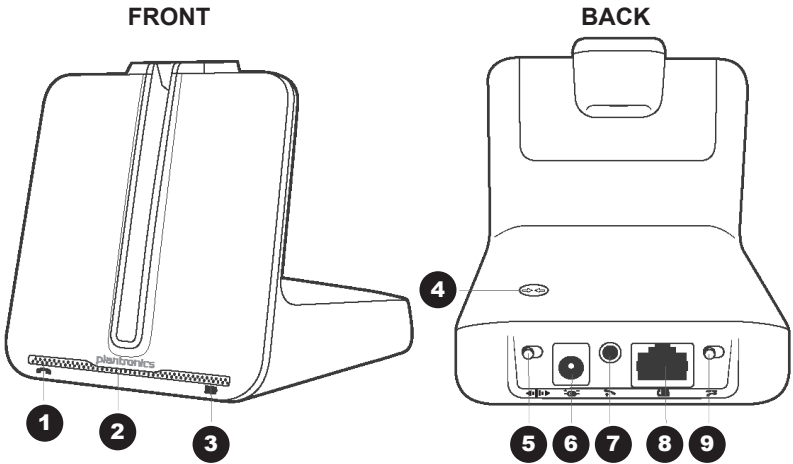


1. Plug one end of the power adapter into the power jack on the back of the base and the other end into a working power outlet. The Power On/Subscription LED is lit solid white.
2. Place the 1542P headset in the charging cradle. The charging LED on the base flashes green when charging and turns solid green when the headset is fully charged. Charge the headset for at least 20 minutes prior to the first use. A full charge takes three hours.
3. Connect the RJ-45 end of the 801-432 cable into the port marked telephone on the 1542P base unit and plug the 2.5mm cable end into the port marked headset on the 1500A counter station as shown below. Select the Privacy key on the 1500A to route audio to the 1542P headset.
4. The 1542P headset and base that came in the box are subscribed (paired) to each other and ready to use after charging.

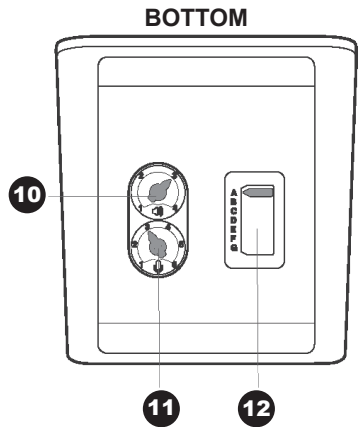


For the complete user guide visit: [www.plantronics.com/content/dam/plantronics/documents-and-guides/en/user-guides/cs540-ug.pdf](http://www.plantronics.com/content/dam/plantronics/documents-and-guides/en/user-guides/cs540-ug.pdf)





- 1 Call/mute LED
- 2 Power on/subscription LED
- 3 Charging LED
- 4 Subscription button
- 5 Narrowband/wideband audio switch
- 6 Power jack
- 7 Handset lifter/EHS cable jack
- 8 Telephone interface cable jack
- 9 Auto answer switch



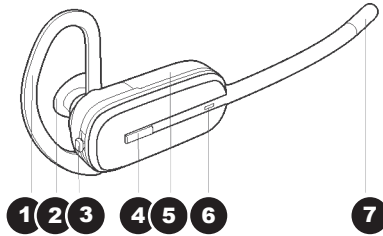
- 10 Listening volume dial\*
- 11 Speaking volume dial\*
- 12 Configuration switch\*

\*For installation set-up

Troubleshooting Tip: If audio is not present, adjust the slide switch **12** setting from A to G. The 1542P default setting is A.

## HEADSET

- 1 Ear loop
- 2 Ear tip
- 3 Volume/mute button
- 4 Call control button
- 5 Battery cover
- 6 Headset LED
- 7 Microphone



## Operation

### 3 Volume/Mute button

- Increase the volume - Slide the volume button up.
- Decrease the volume - Slide the volume button down.
- Mute/Unmute a call - Press the volume/mute button in.

NOTE: This describes the volume controls if you wear the headset on the right. The volume controls are opposite if you wear it on the left.

### 4 Call Control button - Press and release the call control button to talk.

NOTE: Headset should be turned off when not in use to conserve battery power. Press the Call Control button once to turn it off, press it again to turn it back on. With a single full charge, the headset will provide up to 7 hours of talk time. Talk time will be reduced when operating in wideband mode or if the headset is used consistently at greater distances from the base.

### 6 Headset LED flashes white when in use.



2048 Mercer Road, Lexington, KY 40511-1071 USA  
800-322-8346 • 859-233-4599 • Fax: 859-233-4510  
support@audioauthority.com • www.audioauthority.com

752-711B  
Rev. 20190514