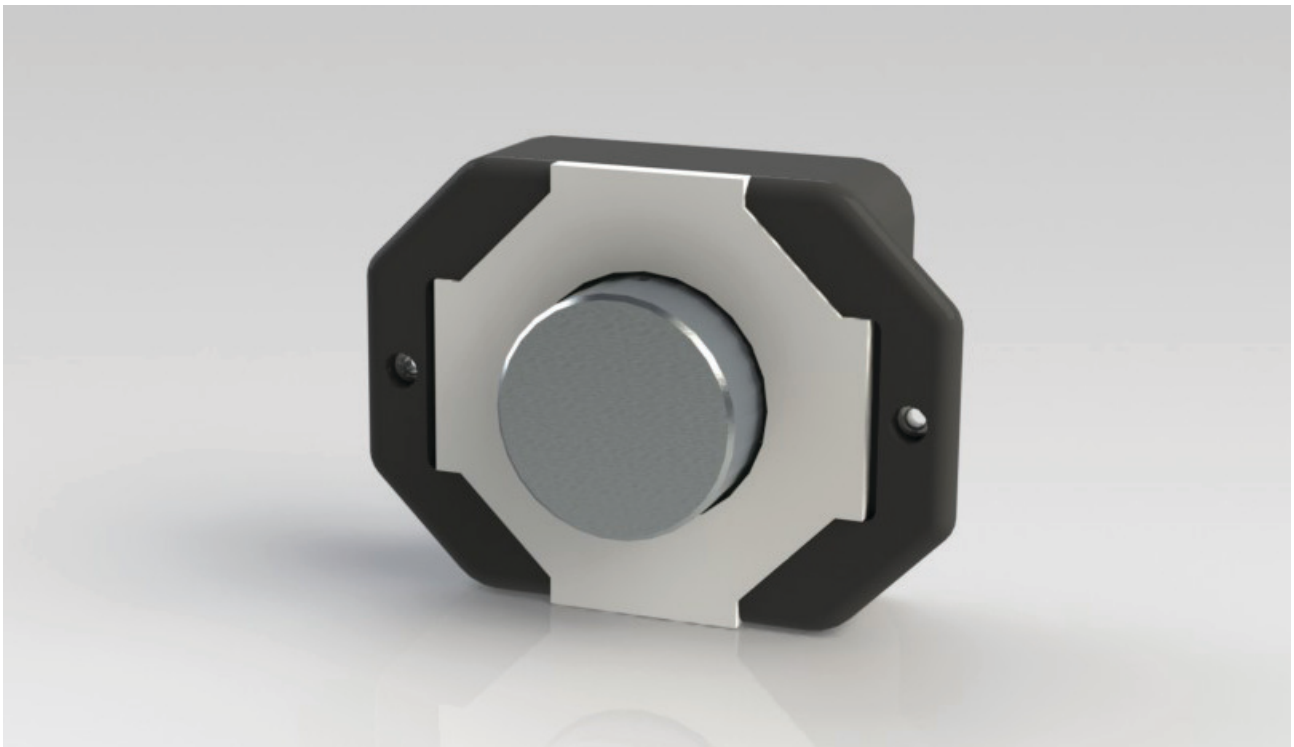


User Manual

Model 1795
Visual Volume™ Control



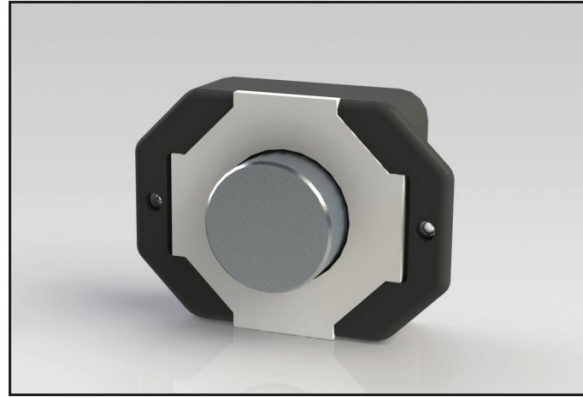
Audio  Authority®

Introduction

The Model 1795 Rotary Control with Visual Volume™ glow ring is designed to execute volume commands and to advance audio tracks with a demonstration device such as an Audio Authority® 1703 Demo Audio Player.



1795 mounted in display with black knob (pn: 672-362)



1795 Rotary Control Assembly unmounted with silver knob (pn: 672-363)

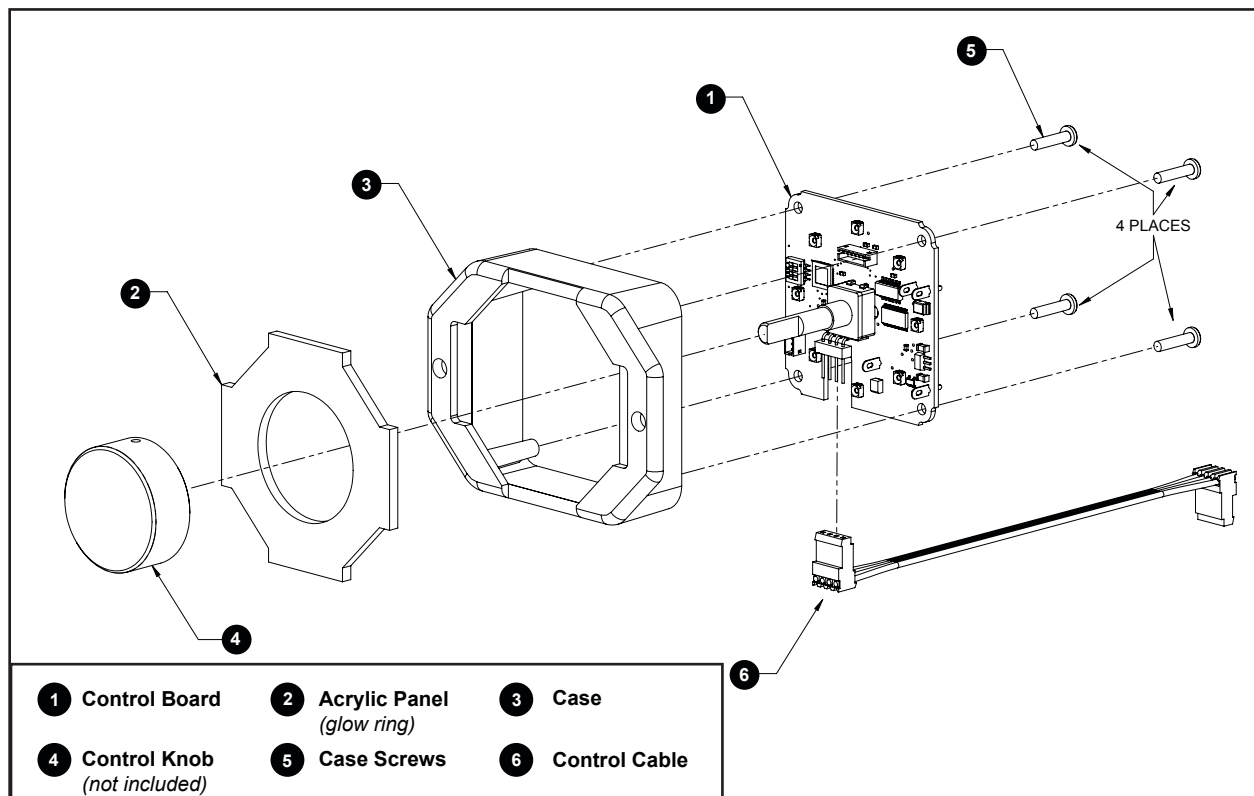
Package Contents

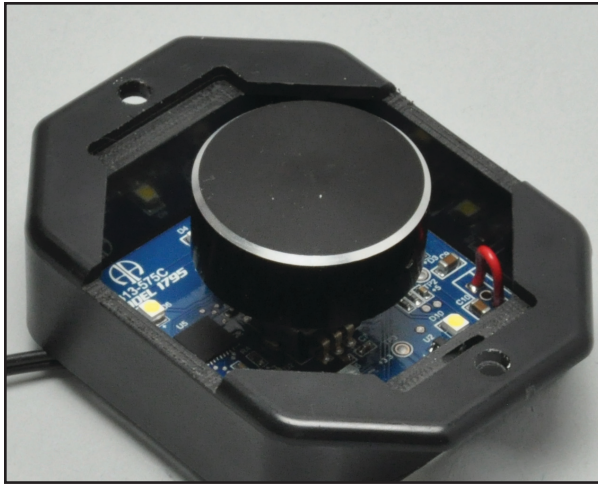
Before installing this product, please check the packaging and make certain the following items are contained in the shipping carton:

- 1795 Rotary Control Assembly (knob sold separately)
- Acrylic Panel
- User Manual

1795 Assembly Details

The 1795 is pre-assembled with the exception of the acrylic panel, which is bubble-wrapped separately to protect it during transit. Fixture design should include threaded studs pressed into the metal fascia, 3 inches apart, flanking a 2.25 inch hole. Follow the instructions on page 3 for mounting.

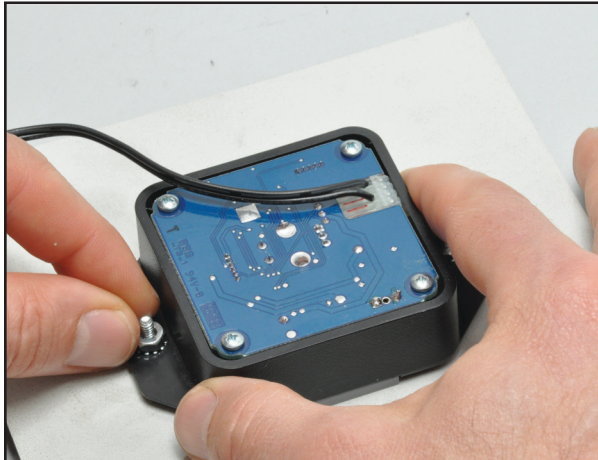




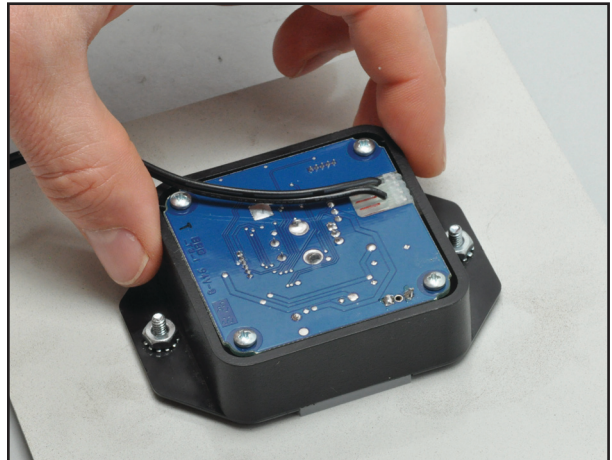
Mount knob (sold separately; pn: 670-362 black, 670-363 silver) to the control shaft of the 1795 Rotary Control Assembly and tighten the hex screw.



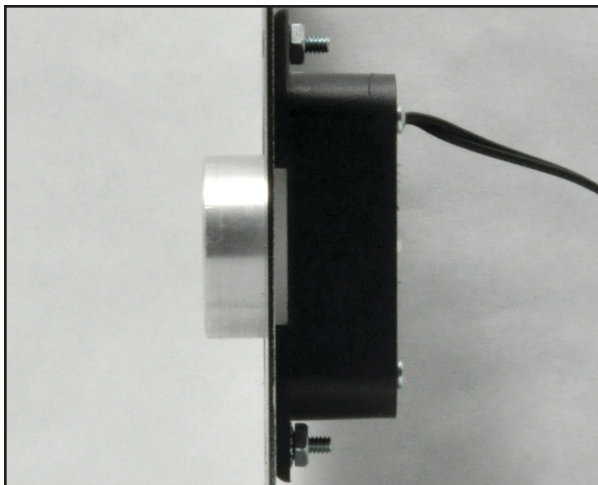
Press the acrylic panel into the face of the 1795 Rotary Control Assembly.



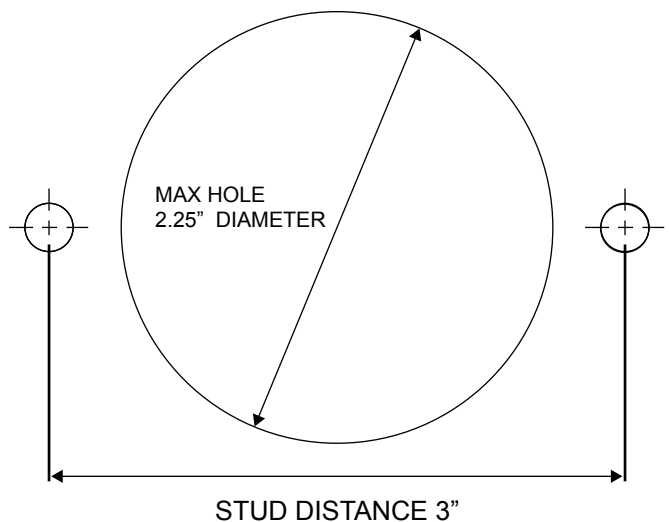
Place Assembly onto the press-in studs of the display fascia and tighten the nuts.



With both nuts tight the 1795 Rotary Control Assembly should be snug against the fascia.

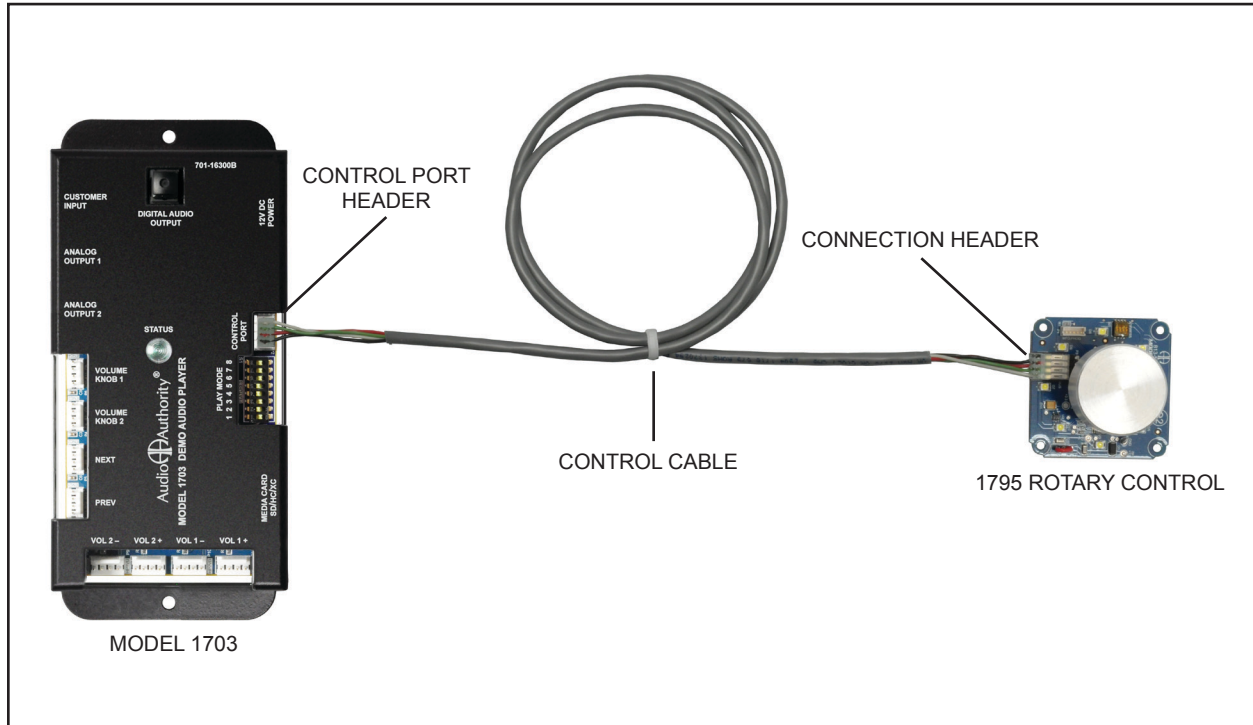


The side view of the assembly; note the acrylic panel pressed against the backside of the display fascia. The edge of the fascia will be slightly raised above the acrylic panel of the 1795 Rotary Control.



Connections

Connect the Control cable from the 1795 rotary control to the 1703 Control Port header as shown below (1795 shown without mounting case for example purposes).



Operation with 1703 Music Player

The 1795 Visual Volume™ Control knob gives visual feedback with its glow ring, its brightness indicating changes in volume; a slow pulse highlights the knob during the 1703 attract mode. Push to play the next track*, and rotate knob to adjust volume.

* **Note:** The attract mode and push functionality may be different based on the connected device.

Audio  Authority®

2048 Mercer Road, Lexington, Kentucky 40511-1071
800-322-8346 • 859-233-4599 • Fax: 859-233-4510
www.audioauthority.com • support@audioauthority.com

752-682 Rev. 20150529